

DESCRIPTION

The S $\frac{1}{2}$ of NE $\frac{1}{4}$ of SE $\frac{1}{4}$ and the
N $\frac{1}{2}$ of SE $\frac{1}{4}$ of SE $\frac{1}{4}$, SECTION 33, TOWNSHIP
48 South, RANGE 42 East, Broward County, Florida.

KNOW ALL MEN BY THESE PRESENTS: That we, the undersigned as officers of POMPANO BEACH LANDS, INC, a Florida Corporation, owners of the lands shown and included on this Plat have caused said lands to be subdivided and platted as shown hereon. All previous plats of said lands are hereby voided, annulled, cancelled and superseded by this Plat.

WE, the undersigned hereby dedicate to the perpetual use of the public for the proper uses thereof, all thoroughfares shown on this plat.

IN WITNESS WHEREOF: We have hereunto set our hands and affixed
our seals.

WITNESSES:

WITNESSES:
R. W. Goheen

Margaret A. Knapp

Wade Hampton Norman, Jr. (SEAL)
COMPASS BEACH LANDS, INC. PRESIDENT

Roy E. Embanks (SEAL)
POMPANO BEACH LANDS, Inc. SECRETARY

STATE OF FLORIDA, } ss
COUNTY OF BROWARD }

I HEREBY CERTIFY: That on this day personally appeared before me, an officer duly authorized to administer oaths and take acknowledgements, WADE HAMPTON HORN, Sr., and ROY E. EUBANKS, President and Secretary of POMPANO BEACH LANDS, INC., and they acknowledged before me that they executed the foregoing dedication as such officers of said corporation in the name of said corporation.

WITNESS: My hand and official seal at Fort Lauderdale, Broward County, Florida, this 30TH day of DECEMBER 1952.

J. W. McLaughlin
NOTARY PUBLIC - STATE OF FLORIDA

My Commission Expires: Feb. 16th 195

I HEREBY CERTIFY: that this Plat complies with the provisions of
"AN ACT TO REGULATE THE MAKING OF SURVEYS AND FILING
FOR RECORD OF MAPS AND PLATS IN THE STATE OF FLORIDA,"
approved by the Governor, June 11th, 1925.

Ted Cabot
CLERK, OF THE CIRCUIT COURT

BY: Dorothy Adams
DEPUTY CLERK

This instrument filed for Record this 19 day of JANUARY, 1953,
and recorded in Book 31, of Plats at Page 1, RECORD
VERIFIED.

Ted Cabot
CLERK OF THE CIRCUIT COURT

BY: Dorothy Adams
DEPUTY CLERK

STATE OF FLORIDA }
COUNTY OF BROWARD } ss

I HEREBY CERTIFY: that this Plat is a true and correct representation of a Survey made by me and that Permanent Reference Monuments have been set as indicated.

Dated at Fort Lauderdale, Florida, this 30TH day of DECEMBER, 1952

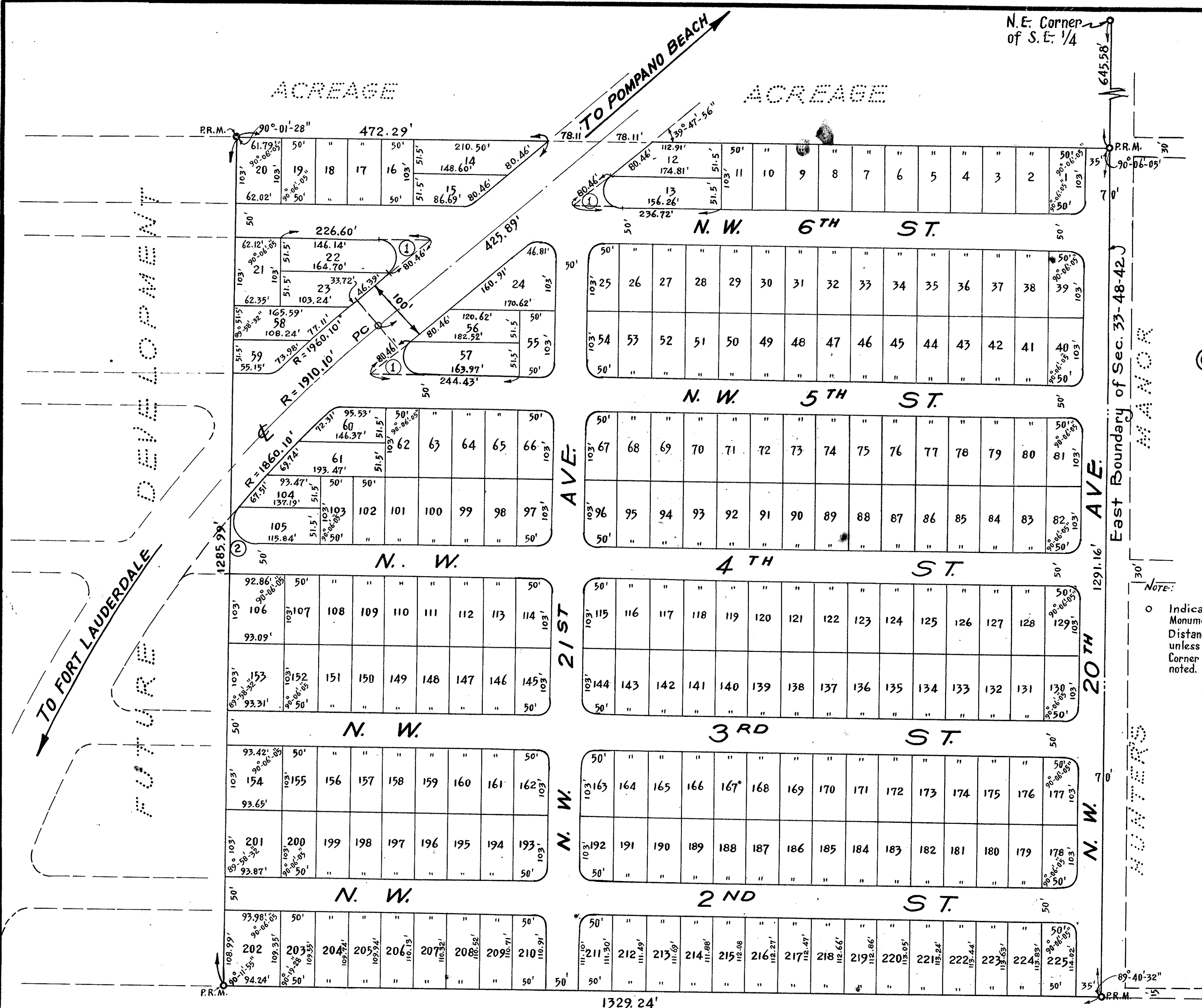
J. W. McLaughlin
REGISTERED ENGINEER No. 1713
REGISTERED LAND SURVEYOR No. 167
STATE OF FLORIDA

Approved for Record

H. B. Davis.
COUNTY ENGINEER

As owners and holders of a Mortgage on the above described property,
I hereby approve this Plat.

Robert L. Parker:
Ima Parker



CURVE DATA

$$\begin{aligned} \textcircled{1} \quad \Delta &= 140^\circ - 12' - 04'' \\ R &= 28.02' \\ T &= 80.46' \\ \text{Arc} &= 68.56' \end{aligned}$$

② $\Delta = 134^{\circ} - 47' - 56'$
 $R = 30.21'$
 $T = 72.57'$
 $\text{Arc} = 71.07'$

COBBIER City

SEC. 33, TWP. 48 S., RGE. 42 E.
BROWARD COUNTY, FLORIDA.

J.W. McLAUGHLIN - CIVIL ENGINEER
FORT LAUDERDALE - FLORIDA

SCALE: 1" = 100' JANUARY 1953

AAC

PZ25- 12000012
02/03/2026